

IP Serial Device Server

Overview

The IPS (IP Serial Device Server) provides easy and reliable Serial-Ethernet connectivity for the industrial automation market. The IPS can be used to connect any serial device to an Ethernet and Internet network, and to provide TCP server, TCP client, and UDP modes to ensure the compatibility of network software.

The IPS Windows driver installs a virtual COM on windows which maps the virtual COM port to the IP address of the IPS across the network, enabling the Windows applications to access remote serial devices over Ethernet and Internet network. The IPS can function as a server or client for both TCP and UDP connection. The application scenarios are Straight IP mode, Virtual COM mode, and Paired mode.

Features and Benefits

- Supports RS-232, RS-422 and RS-485 half and full-duplex serial interfaces
- Various Management Interfaces (Web server, Administrator, Telnet, Console)
- TCP Probe function to ensure reliable connectivity
- 10/100 Mbps Ethernet with Auto-detect
- Built-in Ethernet switch ports for easy Cascaded wiring
- Multiple TCP client connections to a single port
- Supports TCP/UDP, Client/Server, and Socket/VCOM modes
- UDP mode allows broadcast to and from multiple IP addresses
- Supports modem dial-up applications
- Virtual COM drivers for Windows 2000/XP/2003/Vista
- Linux Real TTY driver
- Multiple TCP connections (up to 8) to a serial port
- Provide wide range of baud rate 50bps to 921.6Kbps (*for IPS-5xx models*)
- Secure access through certificate authentication and data encryption (*for IPS-5xx models*)
- 256-bit SSL encryption of all transmitted data (*for IPS-5xx models*)
- DB-9 serial connectors for easy installation

IPS-101E
IPS-102E



IPS-201E
IPS-202E



IPS-204E



IPS-508



Technical Specifications

Feature	Specification	IPS-101E IPS-102E IPS-106	IPS-201E IPS-202E IPS-204E	IPS-508
Serial Interface	DB-9M connector	■	■	■
	Terminal Block connector	IPS-101E	IPS-201E	-
	RS-232 mode	■	■	■
	RS-422 mode	■	■	■
	RS-485(2-wire) mode	■	■	■
	RS-485(4-wire) mode	■	■	■
	Current Loop	IPS-106	-	-
	Baudrate	110bps to 230.4 Kbps, 5787bps, 165250bps		50 bps to 921.6 Kbps
	Biasing Resistors on receiving lies	■	■	■
	Termination resistors & dipperswitches	■	■	■
	Flow Control (None, RTS/CTS, Xon/Xoff)	■	■	■
	Data Packing Delimiters	■	■	■
Forced Transmit , Inter-byte Gap	■	■	■	
LAN Interface	Dual LAN port (built-in Ethernet switch), IEEE802.3, 10/100BaseT, Auto-detect	■	■	■
Communication Types	TCP Server, TCP Client, or UDP	■	■	■
	Straight IP mode	■	■	■
	Paired Mode	■	■	■
	Virtual COM mode (Virtual COM drivers for Windows 2000/2003/XP/Vista)	■	■	■
	Linux Real TTY driver	■	■	■
	WinSock Lib. API	■	■	■
Protocols	TCP, UDP, IP, ARP, ICMP, HTTP, Telnet, DHCP	■	■	■
	UDP Multicast	■	■	■
	SMTP,DDNS,SNTP,SMTP,SNMP,HTTPS	-	-	■
Protocols Relative Function	Client requests connection at Power up or Data arrival	■	■	■
	TCP Inactivity Timeout	■	■	■
	Serial Inactivity Timeout	■	■	■
	Multiple TCP Client Connections (8 per port)	■	■	■
	TCP Probe function	■	■	■
Management	Console, Telnet, Web pages	■	■	■
	Remote Administrator	■	■	■
	Firmware upgrade	■	■	■
	Import/Export Configurations file	■	■	■
Security	Password Access	■	■	■
	IP Address Filtering	■	■	■
	SSL 256-bit Data Encryption, SSHv2	-	-	■
	SSL / Certificate, RADIUS, LDAP	-	-	■
Power & Environment	DC Input (Power Jack) : 10 ~48 VDC	■	IPS-204E	■
	DC Input (Terminal Block): 10 ~48 VDC	-	■	-
	Operating Temperature (0 to 55 °C)	■	■	■
Certifications	CE, FCC	■	■	■
Mechanical	Rugged IP30 Metal Case	■	■	-
	DIN rail mount, Panel mount, or Desktop	■	■	Desktop, Rackmount
	Dimensions(mm)	107 x 115 x 23	107 x 115 x 23	40x125 x44
		107 x 115 x 23	107 x 115 x 23	
107 x 185 x 29		121 x 185 x 23		

IP Serial Device Server (mini type)

Overview

The IPS (IP Serial Device Server) provides easy and reliable Serial-Ethernet connectivity for the industrial automation market. The IPS can be used to connect any serial device to an Ethernet and Internet network, and to provide TCP server, TCP client, and UDP modes to ensure the compatibility of network software.

The IPS Windows driver installs a virtual COM on windows which maps the virtual COM port to the IP address of the IPS across the network, enabling the Windows applications to access remote serial devices over Ethernet and Internet network. The IPS can function as a server or client for both TCP and UDP connection. The application scenarios are Straight IP mode, Virtual COM mode, and Paired mode.

Features and Benefits

- Various Management Interfaces (Web server, Administrator, Telnet, Console)
- TCP Probe function to ensure reliable connectivity
- 10/100 Mbps Ethernet with Auto-detect
- Supports TCP/UDP, Client/Server, and Socket/VCOM modes
- Multiple TCP client connections to a single port
- UDP mode allows broadcast to and from multiple IP addresses
- Virtual COM drivers for Windows 2000/2003/XP/Vista
- Linux Real TTY driver
- WinSock API Lib

IPS-301E



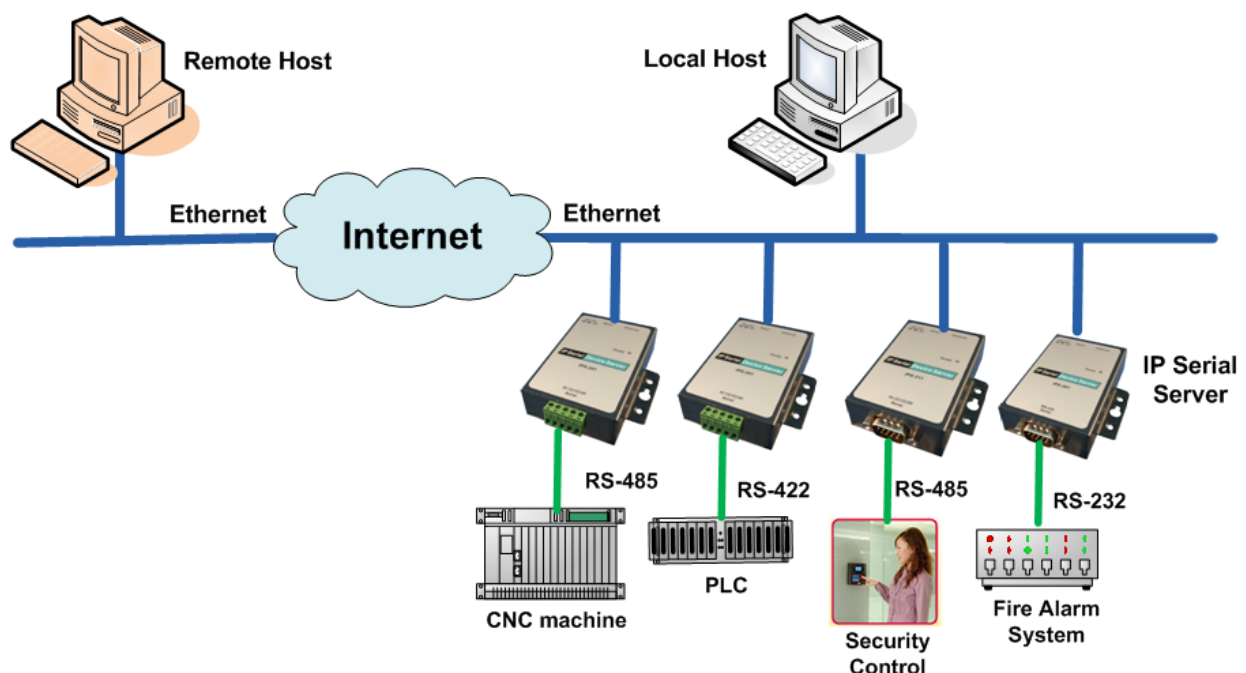
IPS-311E



IPS-331E



Applications



Technical Specifications

Feature	Specification	IPS-301E	IPS-311E	IPS-331E
Serial Interface	DB-9M connector	■	■	-
	Terminal Block connector	-	-	■
	RS-232 mode	■	■	-
	RS-422 mode	-	■	■
	RS-485(2-wire) mode	-	■	■
	RS-485(4-wire) mode	-	■	■
	Baudrate (110 to 230.4Kbps, 5787bps, 165250bps)	■	■	■
	Flow Control (None, RTS/CTS, Xon/Xoff)	■	■	■
	Data Packing Delimiters	■	■	■
	Forced Transmit	■	■	■
	Inter-character Gap	■	■	■
LAN Interface	IEEE802.3, 10/100BaseT, Auto-detect	■	■	■
Communication Types	TCP Server, TCP Client, or UDP	■	■	■
	Straight IP mode	■	■	■
	Paired Mode	■	■	■
	Virtual COM mode (Virtual COM drivers for Windows 2000/2003/XP/Vista)	■	■	■
	Linux Real TTY driver	■	■	■
	WinSock API Lib.	■	■	■
Protocols	TCP, UDP, IP, ARP, ICMP, HTTP, Telnet, DHCP	■	■	■
	UDP Multicast	■	■	■
Protocols Relative Function	Client requests connection at Power up or Data arrival	■	■	■
	TCP Inactivity Timeout (TCP keep-alive timeout)	■	■	■
	Serial Inactivity Timeout	■	■	■
	Up to 8 TCP Client Connections	■	■	■
	TCP Probe function	■	■	■
	Port Status Monitoring	■	■	■
Management	Console, Telnet, Web pages	■	■	■
	Remote Administrator	■	■	■
	Firmware upgrade	■	■	■
	Import/Export Configurations file	■	■	■
Security	Password Access	■	■	■
	IP Address Filtering	■	■	■
Power & Environment	DC Input: 12VDC	■	■	■
	Operating Temperature: 0 to 55 °C	■	■	■
Certifications	CE, FCC	■	■	■
Mechanical	Rugged IP30 Metal Case	■	■	■
	DIN rail mount, Panel mount, or Desktop	■	■	■
	Dimensions(mm): 52 x 80 x 22	■	■	■